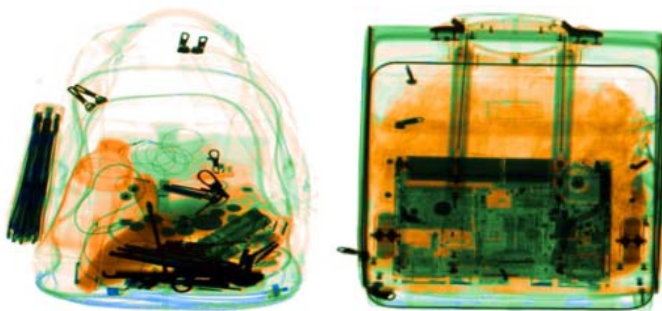


# UNICOMP : UNX10080

เครื่องสแกนกล่องพัสดุ สำหรับการขนส่งสินค้าและพัสดุภัณฑ์

Logistics X-Ray Inspector



## Model : UNX10080

เหมาะสำหรับ : การตรวจสอบความปลอดภัยของสินค้าหรือพัสดุที่ส่งผ่านไปรษณีย์, บริการรับ-ส่งพัสดุด่วน, ท่าเรือ, โกดังสินค้า เป็นต้น

## Features

1. X-ray Tube Voltage : 160kV
2. X-ray detector : Linear array detector
3. Inspection Speed : 0.22m/s (Optional 0.4m/s,0.67m/s)
4. Dimensions : 3250mm[L]×1410mm[W]×1600mm[H]
5. Emission: Extremely low radiation dose adhering to all International Safety Standards.
6. Environment: New advanced lead curtain pressure membrane technology effectively eliminating secondary lead (Pb) pollution.
7. Power: Penetration equivalence of up to a 43mm steel plate.
8. Operation: Intuitive operator interface and media interface for quick learning and optimization of the machine.
9. Software/Imaging: Robust software platform with intuitive control interface. Clean and crisp image presentation meeting all International Standards.
10. Traceability: Cutting edge Cloud traceability functions from initial product scan to final customer acceptance ensuring full safety throughout the process.
11. Support: A full suite of customer support including; remote technical support, direct access to the Cloud, and real time monitoring of machine technical functions/operation.

## Specification

System Parameters	Dimensions	3250mm(L)×1410mm(W)×1720mm(H)
	Tunnel Size	1000mm(W)×800mm(H)
	Weight	1300kg
	Conveyor Height	330±30mm
	Inspection Speed	0.22m/s (0.4m/s,0.67m/s optional)
	Max.Load Weight	200Kg(Even distribution)
	Resolution	40AWG ( $\phi = 0.0787$ mm metal wire )
	Penetration	40mm (Typical), 34mm (Standard)
	Radiation Safety	Meets film safety ISO 1600
	X-ray Dose Rate	<0.12 $\mu$ Gy/h (5cm away from the housing)
X-ray Generator	Anode Voltage	160kV
	Cooling Cycle	Oil Cooling 100%
	Single Inspection Dose	<2.1 $\mu$ Gy
Imaging System	X-ray Detector	Photodiode
	Gray Level	4096

	Monitor	19"
Image Processing System	Image Enhancement	*Black and white *Inverse *High-energy penetration *Low-energy penetration *Super-enhancement *Elimination of organic or inorganic substances *Variable absorption rate *Pseudo-color *Arbitrary selection ( user selected ROI zoom ) ( 64X image magnification/no loss of resolution )
	Recognition	Orange for organic matter, blue for inorganic, green for metal and compound
	Image Playback	50 inspected images could be replayed
	Storage Capacity	No less than 100 thousand pieces of image
	Standard Functions	*Date/time display *Baggage counter *User management *System operation clock *X-ray on clock *POST *Image storage & retrieval *Diagnosis & maintenance *Dual-scan *Image recognition training *Cloud data storage and analysis
Additional Features	Optional Functions	*High density area alarm *Explosives and drugs auxiliary examination *Dangerous goods image insertion
	Operation/Storage Temperature	0~40°C、-5~50°C
Installation Requirements	Humidity	10%~90% (No condensation)
	Power Supply	220VAC±5% 50Hz/60Hz



**WAC RESEARCH CO.,LTD. เลขที่ 9 ซ.ลาดพร้าววังหิน 33 ถ.ลาดพร้าววังหิน แขวงลาดพร้าว เขตลาดพร้าว กทม.10230**  
**โทร. 025303809-10, 025381038 แฟกซ์. 025383098**  
**E-mail: [sales@wacinfotech.com](mailto:sales@wacinfotech.com) เว็บไซต์ [www.wacinfotech.com](http://www.wacinfotech.com)**