

Classroom Management Windows Version

Win 8
Wireless



Optimized to provide a friendly, collaborative classroom solution, teaching and learning in an interactive style is the jumping-off point of Mythware Classroom Management Software. With enhanced performance and availability in an ever-expanding number of languages, Classroom Management is suitable for educators worldwide.

Designed with friendly and easy-operate interface, Classroom Management by Mythware will be easily accepted. It also has good compatibility and stability ,which ensures the compatibility with other software and make sure the long time teaching process. And its performance in wireless environment is as good as wired environment.

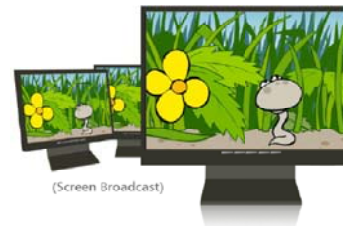
Serving as a management platform for multimedia interactive teaching in computer classrooms, this classroom management software enables the teacher to control and manage the class effectively, supervise students' activities and maintain a good order in class, and the students to learn, communicate and collaborate with each other and between groups.

- Screen Broadcast
- Student Demonstration
- Net Movie
- Camera Broadcast
- Group Management
- Group Chat/ Topic Chat
- Group Teaching
- Monitor & Control
- Remote Command
- Remote Setting
- Quiz/ Survey
- Quiz by Answer Sheet
- File Distribution/ Submit
- Web/ Application Policy
- USB/ CD/ Printer Control
- Message/ Event
- Silence On/ Off
- Thumbnail View
- Auto Connection

Interactive Teaching & Learning

High Speed Screen Broadcast

- Broadcast the screen and voice of teacher side to students in real time.
- Record the process of screen change and voice of microphone of teacher side for after-class review.



Student Demonstration

- Display one student's screen on teacher's and other students' computers to share their work.

Login Mode Management

- Students choose teacher to login.
- Students connect to the teacher in the same channel automatically. **New!**

File Management

- Distribute files to the specified folder of student side.
- Collect files from students' computers at any time.
- Students can submit files to the teacher during class.

Multiple Voice Interaction

- Broadcast only voice to the selected students.
- Talk with the selected student by voice during class.
- Monitor the voice of student side in real time.

Message

- Teachers and students send messages to each other to enhance communication

Camera

- Open the camera of teacher side and broadcast the camera image to students.

Net Movie

- Open media files on teacher side and broadcast it to the selected students.



Group Collaboration

Group Teaching

- Teachers can create groups and identify one active member of each group as group leader.
- Grant group leaders additional capabilities to help lead their groups.

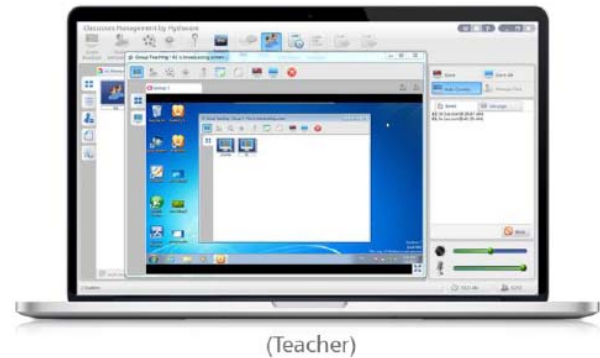


Group Chat

- Teacher and students exchange information by message, drawing and microphone in the same group.

Topic Chat

- Teacher create several topics and students choose the topic to join in.



Effective Control & Assist

Monitor & Control

- Monitor the screen of students in a single view and assist them remotely.

Student Policy

- Set different policies to control the use of web, application, USB, CD and printer of students.



Silence

- Display a message on student PCs, mute their sound devices, and block their input devices simultaneously to get attention.

Student Registration

- Students offer required information to get online lessons.

Remote Command

- Startup, reboot and shut down student PCs by one click from teacher side.
- Launch application, close applications and open website of student side remotely

Remote setting

- Set some common functions like Display, Theme and so on of students remotely.
- Lock students' process to prevent them escaping from the class.
- Lock student screen after network connection is broken.

Assessment

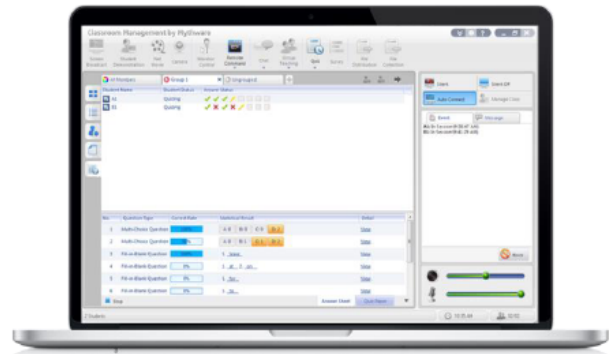
Standard Quiz

- Create quiz paper with four different question types in real time or in advance.
- Distribute the quiz paper and start the quiz instantly.
- Get the score of each student after collecting all the quiz papers and send results to the students automatically.



Quiz by Answer Sheet

- Import the papers edited in other documents and create answer sheet to launch a quick test to students.
- Export the quiz result of the test and each student in the form of HTML.



Survey

- An instant quiz with only one question to check the learning effect of students in real time.
- Get the result immediately after time ends.

System Requirements

Operating System

Windows XP/SP1/SP2/SP3
Windows Server 2003/SP1/SP2
Windows Vista/SP1/SP2
Windows Server 2008

Windows 7/SP1
Windows 7 64bits
Windows 8 Desktop 32 bits/ 64 bits

Hardware Requirements

Teacher Side

Minimum Requirements CPU P4 2.8G, 1Gbytes Memory, 128Mbytes Display Card

Recommended Requirements CPU Core 2 E6300, 2Gbytes Memory, 256Mbytes Display Card

Student Side

Minimum Requirements CPU Celeron 1G, 512Mbytes Memory, 128Mbytes Display Card

Recommended Requirements CPU Core 2 E4300, 1Gbytes Memory, 128Mbytes Display Card

Network Requirements

Cable Network:

10Mbytes/100Mbytes/1000Mbytes Shared Network or Switched Network

Wireless Network:

802.11b/g/n Wireless Network

Feature List

Screen Broadcast

- Broadcast teacher's screen to one or more students.
- Support screen broadcast toolbar, and teacher can broadcast the voice of teacher side and record the process of screen broadcast.
- Teacher can use "Screen Pen" to note the important part on the screen.
- Support the switch between window and full screen of student side.
- Support the adjustment of screen properties.
- Support recording the process with microphone voice of teacher side. **NEW**

Student Demonstration

- Teacher can choose one student to demonstrate its screen to the selected students. Teacher can send voice to the students during student demonstration. **NEW**
- Support the switch between window and full screen of the student who is demonstrating. Teacher can monitor, share or control the operations of the student who is demonstrating.
- Teacher can change the view mode and display quality of the student who is demonstrating.
- Teacher can open the applications of student remotely, use "Screen Pen" and launch a screen record.

Net Movie

- Play media file to one or more students.
- Support all kinds of common media file formats.
- Support the switch between window and full screen.
- Teacher can play, pause and stop the play file, and select previous and next media file.
- Support volume adjustment.
- Display play list, teacher can add or delete media file.
- Support four different playback modes: normal, shuffle, repeat one and repeat all.

Camera

- Teacher can open the camera to broadcast the image of teacher side to one or more students.
- Support the switch between window and full screen.

Group Chat

- Teacher can divide students into different groups and launch group chat.
- Teacher can choose the group to join the chat.
- Support kinds of communication methods, including messages, emoticons, pictures and hand-writing.
- Students in the same group can chat by voice. **NEW**
- Teacher can allow or reject students sending messages.
- Support chat member view, students can know the member in the same group.

- Support shared file view, teacher can share files with students, and students in the same group can download the file.
- Support chat history view, teacher and students can check the chat history.

Topic Chat

- Teacher creates some different topics for students, and students choose the topic they are interested to join.
- Support kinds of communication methods, including messages, emoticons, pictures and hand-writing.
- Students in the same topic can chat by voice. **NEW**
- Support chat member view, students can know the member in the same topic.
- Support shared file view, teacher can share files with students, and students in the same topic can download the file.
- Support history view, teacher and students can check the chat history.

Group Teaching

- Teacher can divide students into groups and launch group teaching.
- Teacher can launch different activities in different group.
- Support two group teaching methods: all groups teaching and part of groups teaching.
- Student screen displays the information of students in the same group.
- Teacher screen displays group list, and teacher can change the group.
- Teacher can choose a group leader for each group to help him finish the teaching task.
- Teacher can set the functions of group leader.

Quiz

- Launch a quiz to one or more students.
- Teacher creates and edits the quiz paper by themselves, and this software offers kinds of different question types.
- Teacher can set quiz time, quiz zoom scale before sending quiz paper.
- Teacher can pause, suspend, resume and stop the quiz.
- Display student list, remaining time and student status when quiz.
- Collect the quiz paper automatically after all the students submit the quiz, and teacher can also collect the quiz paper ahead of time.
- Teacher can grade the quiz paper directly after collecting all the papers.
- Teacher can add comments to each question and then send results to the students in the form of HTML.
- Support quiz statistics, teacher can check the information of question list, student score and statistical graph.
- Support exporting the quiz statistic information.

Test

- Launch a test to one or more students by answer sheet.
- Teacher can import quiz paper of kinds of document types. **NEW**
- Teacher creates and edits the answer sheet by kinds of question types.
- Teacher can save the answer sheet type for use next time.
- Teacher can export the test result in the form of HTML. **NEW**

Survey

- Launch a survey to one or more students.
- Teacher can set only one question each time.
- Support two different question type: multi-choice question and true or false question.
- Teacher sets duration time and correct answer to each question.
- Teacher can open and save the survey paper. **NEW**
- Grade automatically for the question set correct answer and display the result in the form of histogram.

Monitor & Control

- Remote monitor one or more students.
- Support the switch between window and full screen when monitoring single student.
- Support auto switch between students, and teacher can choose previous screen or next screen of students.
- Teacher can monitor, share or control the operations of the student when monitoring.
- Teacher can launch student demonstration when monitoring students.
- Teacher can change the view mode and display quality of the student when monitoring.
- Teacher can open the applications of student remotely, use "Screen Pen" and launch a screen record when monitoring.
- Teacher can receive the voice from monitored student and send voice to the monitored student when monitoring single student. **NEW**

Policy View

- Support policy view, teacher can set policies of web, application, USB disk, CD and printer.
- Teacher can set different policy to different students.
- Support three different web policies of web and application: all open, white list and black list.
- Support four different application policies of USB disk and CD: open, read only, no execute and block all.
- Support two different printer policies: open and block.
- Teacher can check the current policy of students.

Remote Command

- Teacher can open not only local applications, but also applications of student side remotely.
- Teacher can open website of student side remotely. **NEW**
- Teacher can start up student's computers remotely. **NEW**
- Teacher can shut down or reboot student's computers remotely.
- Teacher can close running application on student PC remotely.
- Teacher can link to remote settings directly. **NEW**
- Support adding running application of students to the remote command list. **NEW**

Remote Settings

- Teacher can set the Display, Proxy Server, Themes, Desktop, Power Schemes, Screen Saver and so on of students.
- Teacher can lock student process. **NEW**
- Teacher can lock the screen of student side after network connection is broken **NEW**

File Distribution

- Teacher can distribute files to one or more students.
- Teachers can drag and drop to add files.
- Teacher can set default target folder.
- Teacher can select the action when there are duplicate files existing in client.
- Teacher can select the action when client meet error during file transfer.
- Support three different views: large icon, list and detail.

File Collection

- Open the file submit dialog of student side to collect files.
- Teacher can allow or forbid students submitting file and set different policy to different students.
- Support file submit view, teacher can check the situation of file submission.
- Teacher can accept or deny file from students.
- Teacher can limit the file size and file number.
- Teacher can change the default folder path that store submission files.

Manage Class

- Save the class model to keep use next time.
- Support importing class model. **NEW**
- Create, edit and activate classes.
- Force students in the class model to register, so that teacher can check the student information in the current class.
- After all the students registered the registration function will stop automatically in the teacher side. **NEW**

Class Model

- Teacher can check the thumbnail of students in the class.
- Teacher can sort students by name, status or IP address.
- Show battery icon when the battery power is lower than the value teacher set. **NEW**

Silent

- Launch a silent operation to blank student screens to gain attention.
- Keyboard and mouse of students are locked when launching a silence operation.
- Display the message full screen, and the message can be defined by teacher.
- Teacher can cancel the silent operation.

Login Mode **NEW**

- Teacher can login the class by teacher name or channel ID.
- Students can select the teacher when teacher login the class by teacher name.
- Students will auto connect to the teacher in the same channel when teacher login the class by channel ID.

Message and Event

- Teacher can check the information of students, such as in session, hand-raise, log out and so on.
- Teacher can block hand-raise of students. **NEW**
- Teacher and students can communicate with each other by sending messages.
- Teacher can send message to the selected or all the students. **NEW**
- Support display messages of different students in different dialog. **NEW**

Volume Control

- Support adjusting playback volume and microphone volume in the main interface.

WAC RESEARCH CO.,LTD.
Tel. 02-5303809-10, 02-538-1038,
02-539-9352 Fax. 02-5383098
E-mail : sales@wacinfotech.com
Website : www.wacinfotech.com