

IR52D

Wifi Touch Screen Iris Recognition Access Control System

IR52D is a industrial standard dual eyes Iris Recognition Access Control System, which features versatility and flexibility allows for easy integration with Wiegand and network based access control, time and attendance, visitor management and point of sale applications. IR52D Retinal Scanner Door Lock provide highly accurate, non-contact identification by the iris of the eye from 20 cm away while delivering security, convenience, privacy and productivity to millions of people around the world. It is a wise choice for government, bank, prison and coal mine projects.

Features :

- The shell of high strength, resistance to shock and vibration
- IP64 waterproof, flexible seaing gaskets, anti-dust, vapor, fog, haze, grease
- Fanless, wide temperature adaptability, stable for a long time in hot or cold environment
- Capture iris images automatically, identify within 2s without any co-ordination of the users
- Infrared lighting meets safety standards, without any harm to the eyes
- Built-in wired networks and 802.11/g wireless network
- 6.4 inch color LCD touch screen for better customer experience
- Rotation camera for different angel authenticate.
- Software customization according to different projects' requirements
- 10000 large user capacity



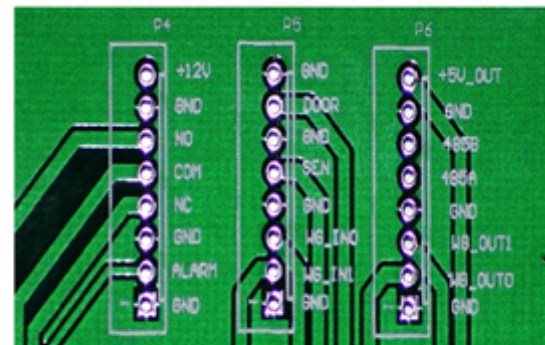
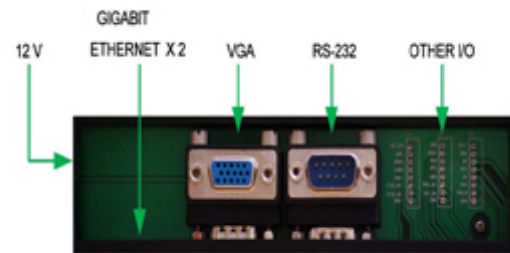
Specifications :

Iris Capacity	10,000
Transaction Capacity	10,000,000
Iris Rotation Angle	-35°-+35°
Iris Capture Range	16cm-20cm
Voice indication	English , Chinese , Multi-languages
Communication	TCP/IP,RS232/485,WIFI,USB
Display	6.4 inch TFT LCD touch screen
IR LED Lights	Three IR LED Lights
Wateproof Rate	IP64
Power Supply	12V DC
Operating Temperature	-20°C-+60°C
Operating Humidity	20%-90%
Relay	Two dry contact relay
GPIO	Programmable GPIO
Card Reader	125KHZ EM card reader, 13.56MHZ MF card reader
SDK,Source Code	Delphi,VB,VC,C#
FAR	<0.000001%
FRR	<1%
Dimension	248*209*43 mm
Gross Weight	2.5kg

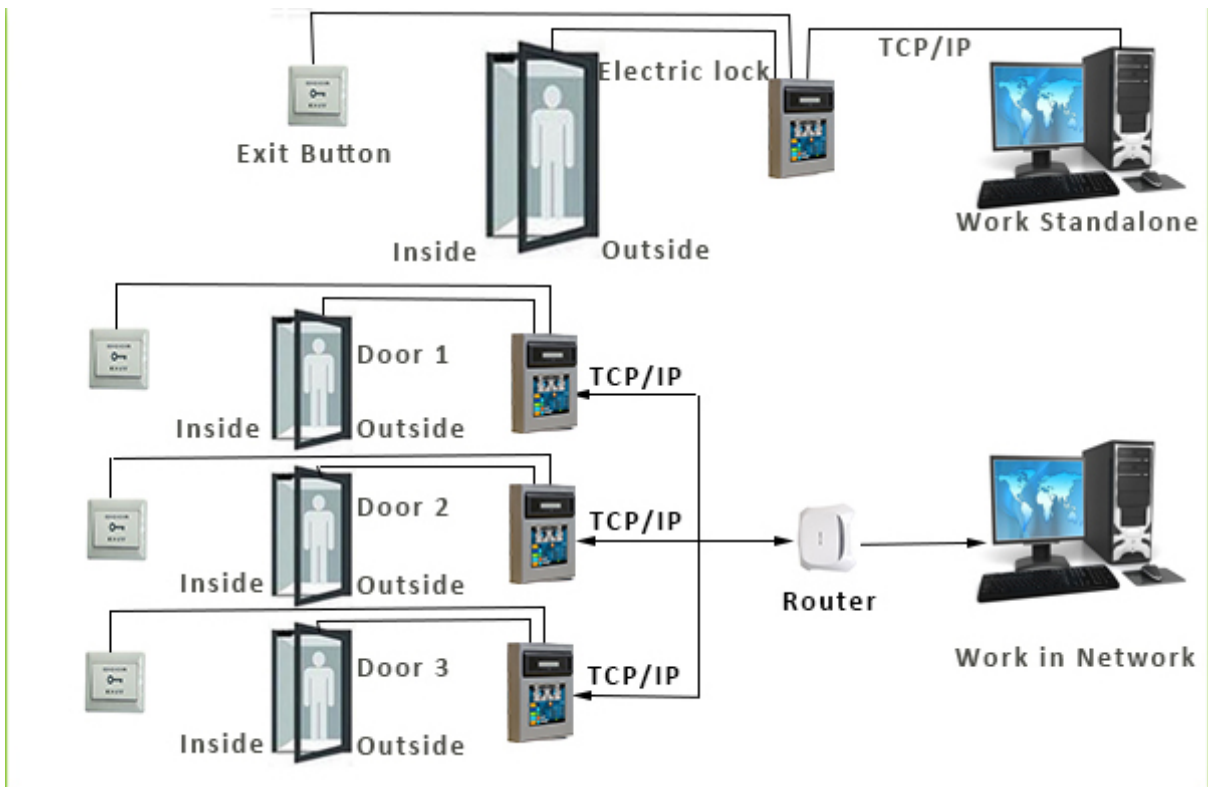
Data I/O

PIN NO.	DESCRIPTION	PIN NO.	DESCRIPTION
1	12V	9	GND
2	GND	10	DOOR
3	NO	11	GND
4	COM	12	SEN
5	NC	13	GND
6	GND	14	Wiegand_In0
7	ALARM	15	Wiegand_In1
8	GND	16	GND

PIN NO.	DESCRIPTION	PIN NO.	DESCRIPTION
17	5V	25	GIGABIT ETHERNET X 2
18	GND	26	300M WIFI
19	485B	27	VGA
20	485A	28	RS-232
21	GND	29	12V POWER SUPPLY
22	Wiegand_Out0	30	BLUETOOTH 2.0
23	Wiegand_Out1		
24	GND		



Functions	IR52D	LG Iris
Thickness < 50mm	✓	✗
Scan Range >60mm	✓	✗
LCD Touch Screen	✓	✗
Record Capacity >10,000,000	✓	✗
Giga network card	✓	✗
VGA port	✓	✗
Wireless network	✓	✗
Enrollment on device itself	✓	✗
Rotation angle of Iris camera	✓	✓
Free SDK	✓	✗
Free demo source code	✓	✗



X

ADD PERSON
DELETE PERSON
EDIT PERSON

14:3

3100

IP: 192.168.1.8

COMPANY 1		ID	NAME	DEVICE	SEARCH					
DEPART 1		ID	COMPANY	NAME	GENDER	DEPARTM	CARD ID	AUTHORITY	MODE	IRIS
<input type="checkbox"/>		2006000001	1	JoneXie1		headoffice	1234567890	3;		<input checked="" type="checkbox"/>
<input type="checkbox"/>		20101903	1	HAN		headoffice	12344	3;		<input type="checkbox"/>
<input type="checkbox"/>		2004000020	1	shen		headoffice	13	3;		<input checked="" type="checkbox"/>
<input type="checkbox"/>		1100	1	tay		headoffice	1	3;		<input type="checkbox"/>
<input type="checkbox"/>		2004000021	1	gong		headoffice	1	3;		<input type="checkbox"/>
<input type="checkbox"/>		2004000088	1	tian		headoffice	88	3;		<input type="checkbox"/>
<input type="checkbox"/>		2004000089	1	YOU		headoffice	-1	3;		<input type="checkbox"/>
<input type="checkbox"/>		2000400008	1	CHENHAN		headoffice	-1	3;		<input type="checkbox"/>
<input type="checkbox"/>		2004000098	1	CHANG		headoffice	-1	3;		<input type="checkbox"/>
<input type="checkbox"/>		201401	1	test		headoffice	11	3;		<input type="checkbox"/>
<input type="checkbox"/>		123456	1	test1		headoffice	1111	3;		<input type="checkbox"/>
<input type="checkbox"/>		1122	1	ss		headoffice	11	3;		<input type="checkbox"/>
<input type="checkbox"/>		2120	1	kk		headoffice	221	3;		<input type="checkbox"/>

WAC RESEARCH CO.,LTD. Tel : 025303809-10, 025381038
 E-mail : sales@wacinfotech.com www.wacinfotech.com