

***The Scan Module For Kiosk
Plustek VTM 300***

plustek

Contents

- About Scan Module VTM 300
- Basic Specifications
- Photos of Scan Module
- Mechanical 2D Drawing
- Quick Check of Device Status
- Product Function Description
 - Cover Sensor
 - Self-Check & Auto Eject
 - Auto Feed Paper (Card)
 - Paper Skew Detection
 - Auto Deskew
 - Adjustable Open Cover Direction
 - Paper Jam Detection
- Q&A

About Scan Module VTM 300

The Duplex scan module VTM 300 designed for VTM (Virtual Teller Machine) and self-service Kiosk.

The Duplex scan module VTM 300 brings reliable and efficient document input to the VTM and self-service kiosk system. Built-in multiple sensors to auto-feeding paper when detected, prevent paper skew or jam during scan process. With 2 eject paper output directions (forward or backward), system programmer can easily setup scan flow to accept the document or return to user.

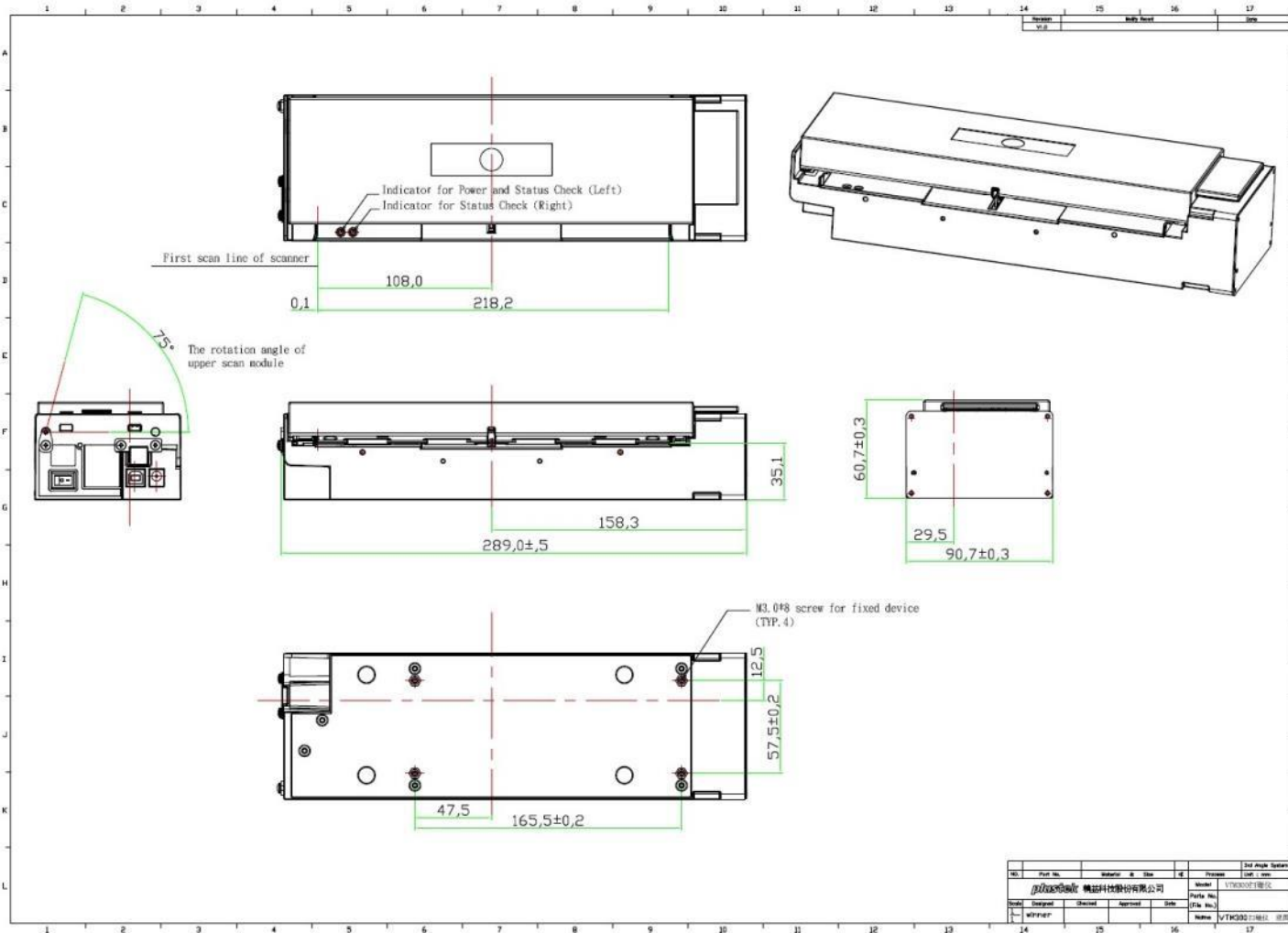
Main Features:

- The scanner module designed for industry application
- Auto detect document skew angle to prevent paper jam
- High scanning speed (30ppm@300dpi/Color/Duplex/A4)
- Easy to maintain and install

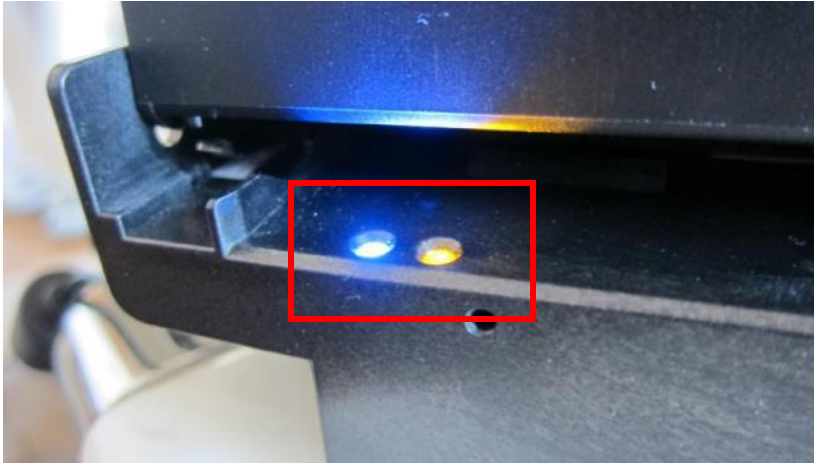
Basic Specifications

Image Sensor	CIS x 2
Optical Resolution	600 dpi
Hardware Resolution	600 dpi x 600 dpi
Scan Modes	Color: 48-bit Input; 24-bit Output Grayscale: 16-bit Input; 8-bit Output B/W: 1-bit
Scanning Speed	30ppm / 60ipm (Color Mode, 300 dpi, A4) <i>Note: Scanning speed varies, depending upon the scanning software, CPU and RAM of PC.</i>
Scanning Area (W x L)	Max: 216 x 594 mm (8.5" x 23.4") Std: 210 x 297 mm (8.27" x 11.69")
Acceptable Paper Sizes (W x L)	Max: 218 x 594 mm (8.6" x 23.4") Min: 54 x 54 mm (2.1" x 2.1")
Acceptable Paper Weight (Thickness)	Paper: 50g/m ² to 250g/m ² Plastic card: Non-Embossed up to 1 mm & Embossed up to 1.24 mm (ISO 7810)
Power Supply	24Vdc , 1.25A
Interface	USB 2.0 / 3.0 (Competible)
Net Weight	1.2 Kgs (2.67 Lbs)
Dimensions (W x D x H)	289 x 90.7 x 60.7 mm (11.38" x 3.57" x 2.39")
Protocol	TWAIN compliant (Option)
OS	Windows 7 / 8 / 10

Mechanical 2D Drawing



Quick Check of Device Status



Indicator Status	Left LED	Right LED
Ready & Stand by	Blue	OFF
Check Cover Sensor	Blue	Orange
Paper Jam	Blue	Blue
Memory Error	Blue	Blue (Flicking)

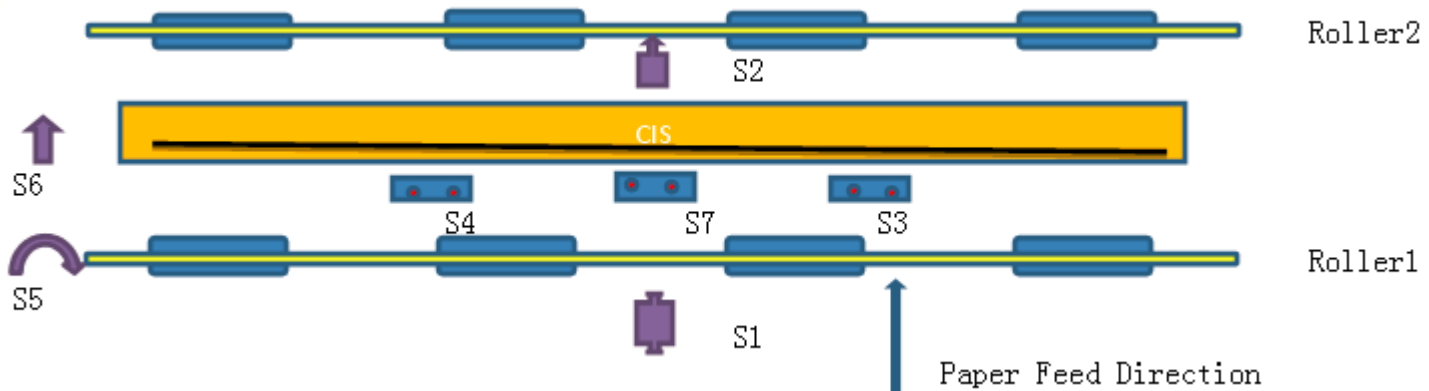
Cover Sensor



1) When the scanner is power on, and the cover is closed firmly, the status indicator on the right shines blue.

2) When the scanner is power on, and the cover is not closed well, the status indicator on the right shines yellow-orange to notify the user to close the cover firmly.

Self-Check & Auto Eject

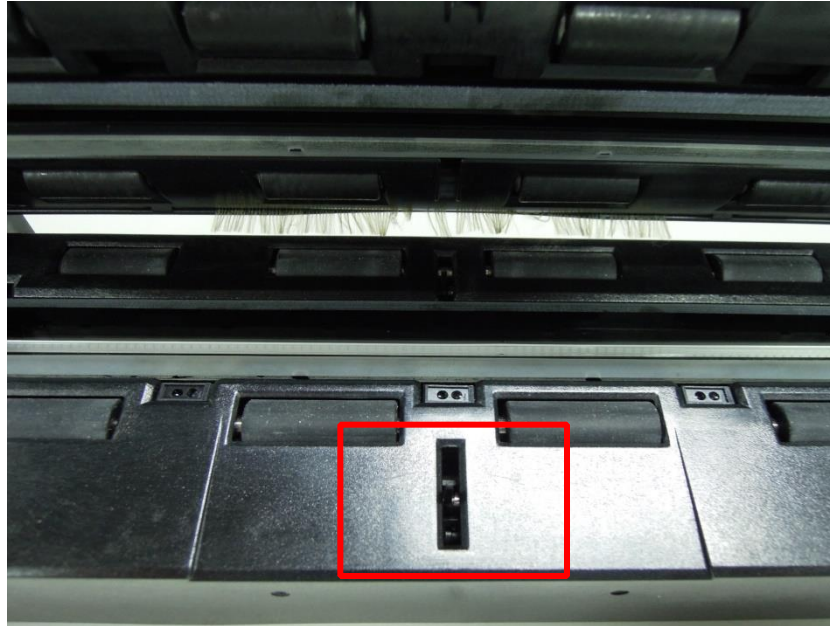


1) When the scanner is power on, and there is no paper inside, the scanner will do nothing.

2) When the scanner is power on, and there is some paper inside, the scanner will take the following actions:

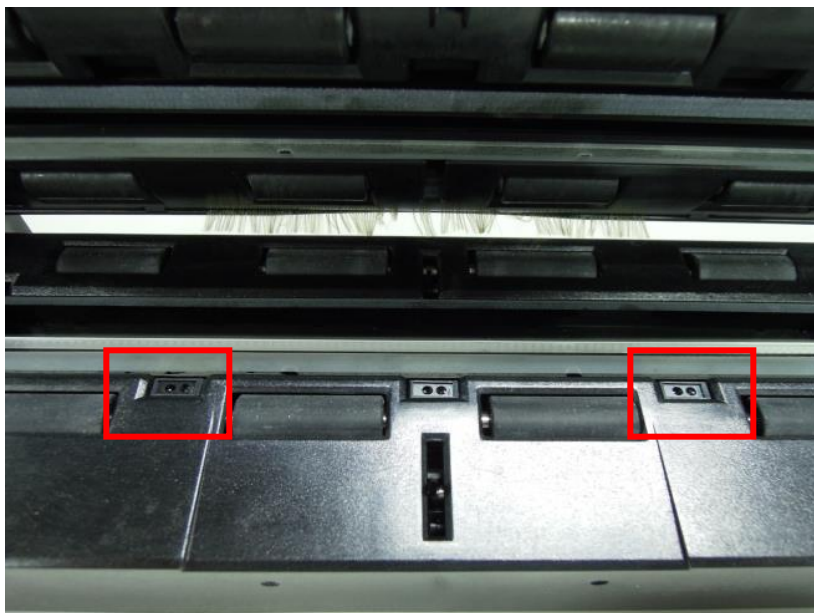
- If only the **S2** detects the paper and others don't detect the paper, the VTM 300 will eject the paper from the back end and drop the paper in the recycle box.
- If more than one of the **S3**, **S4** or **S7** detects the paper, or more than one of the **S3**, **S4**, **S7** and the **S2** detect the paper, the VTM 300 will eject the paper from the front end and return the paper to the user.
- If only the **S1** detects the paper and others don't detect the paper, the VTM 300 will feed the paper.

Auto Feed Paper (Card)



When the scanner is power on, user inserts the paper from the front end, if the Sensor1 detects the paper, the VTM 300 will feed the paper. At the same time, the VTM 300 will detect the skew and the paper jam, if there is no abnormal situation, the VTM 300 will feed the paper.

Paper Skew Detection



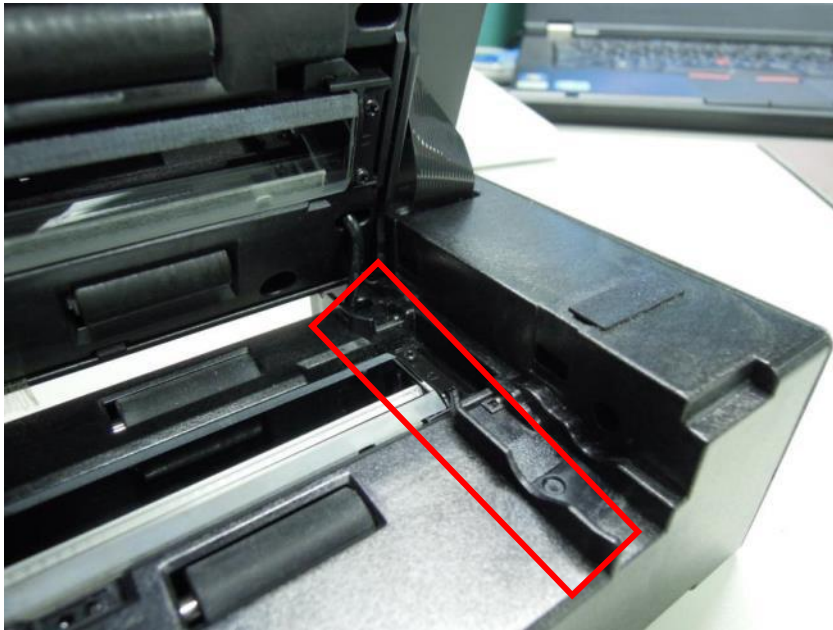
1) User inserts the paper from the front end, if the **S1** detects the paper, the VTM 300 will feed the paper. At the same time, the **S3** and **S4** detect the paper skew.

2) If the detected skew angle is larger than the default setting, the paper will be judged skew, the VTM 300 will eject the paper from the front end to the user, and the user has to reload the paper.

3) If the detected skew angle is smaller than the default setting, the paper will be judged normal and the VTM 300 will feed the paper.

4) Skew angle can be customized, customer can set desired skew angle as the default setting.

Auto Deskew



1) If user insert the paper with angle, but the skew angle is under the default settings, the VTM 300 will feed the paper.

2) When the user scan the document, the VTM 300 will auto deskew the scan document, user can see the correction from the walking trace of the paper and the scanned result.

3) User can see the correction from the walking trace of the paper.

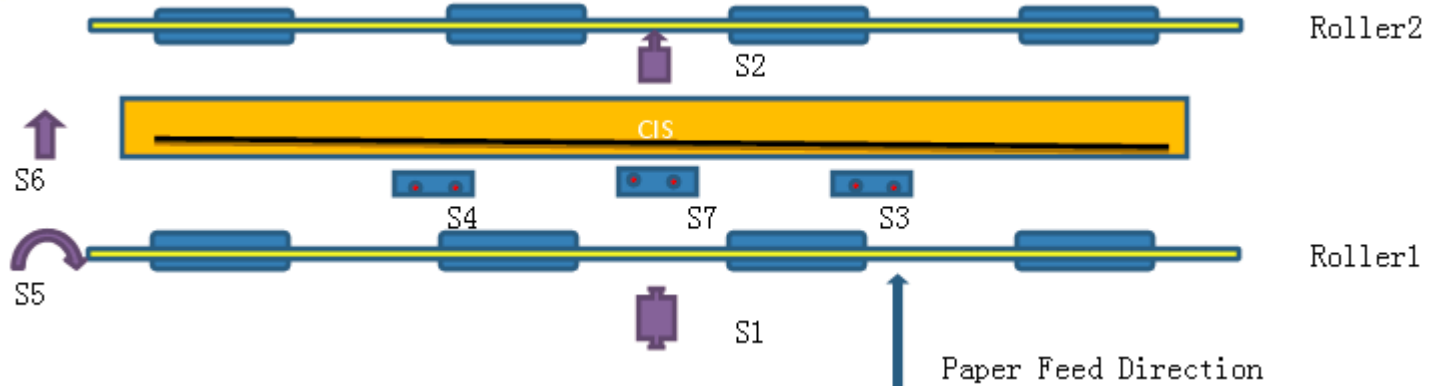
4) User can see the correction from the scanned result. User can see the concave correction in the opposite side of the skew.

Adjustable Cover Open Direction



- 1) There are 2 directions for VTM300 to open the cover, one is open from the front and the other is open from the back.
- 2) Customer can decide the cover open direction.

Paper Jam Detection



1) The VTM 300 will auto detect paper jam when it is occurred in the scanning process.

2) When the user click on the Scan button to scan the document, if the **S2** doesn't detect the paper after a certain period of time, no matter the **S5** signal is normal or abnormal, the VTM 300 will eject the paper from the front side and end up this scan without saving the image.

3) When the user click on the Scan button to scan the document, if the **S2** detects the paper after a certain period of time, and the **S5** signal is abnormal, it is judged to be paper jam, the VTM 300 will stop the Motor and end up this scan without saving the image.

Q&A



For more information
sales@plustek.com